

# IFLA NEWS



The main purpose of the [IFLA Standing Committee on Education and Academic Affairs](#) (IFLA EAA) is to advance education in landscape architecture globally, especially in developing countries. The committee strives for the promotion and maintenance of high standards of academic competences in landscape architecture by facilitating the support and cooperation related to educational development, accreditation and parity across IFLA member countries.

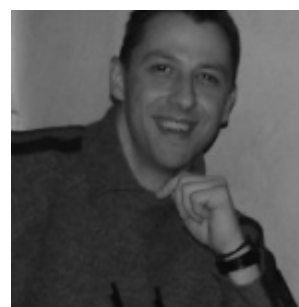
Following the decisions of the last IFLA World council in Turin, EAA committee work is currently focused on the following activities and projects:

**'PREP' Survey - IFLA Professional Requirements and Education Possibilities Survey:** with the goal to design a user-friendly database of landscape architecture educational programmes and related landscape education across the five IFLA Regions. Combined with the work of the IFLA Standing Committee on Professional Practice and Policy (IFLA PPP), the database will provide information on legal requirements for professional practice in landscape architecture across the world.

**IFLA Accreditation - Assessing the needs and possible models of IFLA [Regional] accreditation of Landscape Architecture education programmes** - At this moment, we are preparing the draft procedures, based on existing IFLA Education Standards, [IFLA/UNESCO Charter for Landscape Architectural Education](#) and [IFLA Guidance Document for Recognition or Accreditation](#).

DECEMBER 2016

# 02



This weeks IFLA news is from the Chair of the IFLA EAA Committee, Andreja Tutundzic

[Subscribe](#)[Share ▼](#)[Past Issues](#)[Translate ▼](#)

Estonia, Hungary, and Holland, IFLA EAA participate in two-year long project aimed at recruiting the best experts in landscape architecture education to elaborate tools for assessment of the existing landscape architecture study programmes and subjects according to the standards and the requirements of the International Federation of Landscape Architects (IFLA-Europe) and the European Council of Landscape Architecture Schools (ECLAS). The Project is funded by the Erasmus+ Strategic Partnership Programme

**IFLA Education Standards for African schools:** It is expected that IFLA representatives will attend the postponed Ethiopian Landscape Forum organised by the Ethiopian Institute of Architecture, Building Construction and City Development (EiABC). Among other activities, the Forum is planned to promote IFLA global educational standards in African schools and assess the current condition of landscape education in Ethiopia.

The IFLA EAA Committee Working Group [IFLA Student Design Competition](#), under the lead of Prof. Beverly Sandalack, is working on the preparation of a **Retrospective of IFLA Student Design Competition**, with the goal to provide opportunities for national associations and schools to obtain the digital copies of selected works from previous IFLA Student Competitions (2002-2015), ready for printing, and display them in a form of appropriate exhibitions at the time and place they find suitable.

A second Working Group, **IFLA Capacity-Building in Education**, under the lead of Prof. James Taylor, is continuing work on establishing the procedures for transfer of existing models of capacity-building programmes in landscape architecture in the regions and countries of need.

Please stay tuned for the upcoming news which will focus on some of these activities as they progress!

From our members: The **Making of Ethiopian Landscapes** will be the first event of the Ethiopian Landscapes Forum, taking place 15-16 December in Addis Ababa. The conference and exhibition will seek to raise awareness of the profession of landscape architecture locally and the importance of it in the country's development, highlight some of the roles of the profession within the local built environment, aid capacity building for staff and students and to begin the education standardization process for the profession within Africa. More information is on the IFLA Website [here](#).

**Events from around the World:** <http://iflaonline.org/events/>

**Browse the latest job opportunities here:** <http://iflaonline.org/job-adverts/>

**Become a Friend of IFLA** <http://iflaonline.org/home/friends-of-ifla/>

 FRIEND ON FACEBOOK

 FOLLOW ON TWITTER

 VISIT OUR PAGE

Subscribe

Share ▼

Past Issues

Translate ▼



**IFLA**  
INTERNATIONAL FEDERATION  
OF LANDSCAPE ARCHITECTS

Copyright © 2016 International Federation of Landscape Architects (IFLA), All rights reserved.

**Our mailing address is:**

admin@iflaonline.org

Want to change how you receive these emails?

You can [update your preferences](#) or [unsubscribe from this list](#)

---

This email was sent to <<Email Address>>

[why did I get this?](#) [unsubscribe from this list](#) [update subscription preferences](#)

International Federation of Landscape Architects · Av Louise 149/24, 12th floor · Brussels 1050 · Belgium