

Subscribe

Past Issues

Translate ▼

IFLA NEWS

Chile - Proyección de los Paisajes Culturales, Agentes Modeladores y Creadores de Paisaje



Emerging voices in the IFLA AMERICAS Region celebrated April Landscape Architecture Month

The IFLA AMERICAS Council of Students and Emergent Professionals convened its members to celebrate Landscape Architecture through an open call to self-organize an online Colloquium under a common theme, "CULTURAL LANDSCAPES | Landscape modeling agents". The theme could be adapted to each local landscape reality. [The call, lead by the network of Local Leaders, had an enthusiastic response from members in Brazil, Argentina, Colombia, Uruguay, Mexico, Bolivia, Costa Rica and Chile.](#) Some of the activities were held simultaneously, and most were videotaped to be released through YouTube. Some are already online: [here](#) and [here](#).

In most of the locations participants from a diversity of backgrounds and interested citizens joined the conversation structured by a series of presentations on a panel format, followed by an open dialogue between the participants and the panelists.

Some of the local themes included:

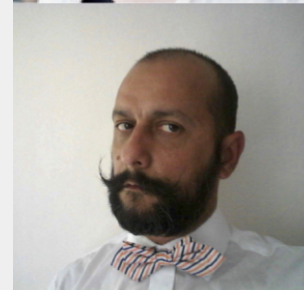
Anthropic and natural activity in river basin landscapes - the Conformation of the City of La Paz and its geomorphology are intimately related to the geology of its river basins.

Water drought as a Landscape modeling agent - Brasilia's water shortage crisis poses the question of the need to shift to a new paradigm of the built Landscape.

Landscape as a political expression. "Landscape differs

JUNE 2017

16



This weeks IFLA News comes from Raquel Penalosa President of IFLA Americas and Leonardo

Subscribe

Past Issues

Moreira, Chair
IFLA AMERICAS

Translate ▼

from the one perceived from outside, as a consumer of the landscape, from the inhabitant that is immersed in a daily life. Pedro Berger, Uruguay.

[The Council of Students and Emergent Professionals \(CSEP\)](#) is an initiative of IFLA AMERICAS approved by the World Council in Moscow in 2015 as an IFLA Global Project. Since then the Council under the leadership of its Chair, Leonardo Moreira along with the Local Leaders has gathered members throughout the continent. The Council functions as a transversal collaboration and open group guided by Local Leaders from each country that convene, collect and disseminate the information, and activities. The Council has a network of social media through WhatsApp, Facebook, YouTube. The ELEPA – the Landscape Latin American Students Gathering taking place during the AR Regional Conferences since 2011 is now an integral part of its activities. The IFLA AMERICAS Council of Students and Emergent Professionals is eager to join the larger IFLA community of students and emerging professionals, to explore common and diverse voices through the IFLA Young Advocacy Committee and others.

Council of
Students and
Emerging
Professionals

Let's come together! To join the conversation please email admin@iflaonline.org.

IMAGE: Chile - Proyeccion de los Paisajes Culturales, Agentes Modeladores y Creadores de Paisaje

In other news...

The open call for nominations for Chair of the IFLA Landscape Architects Without Borders (LAWB) Working Group closes this Monday 19 June 2017. For all nomination information, click [here](#)

Events from around the World: <http://iflaonline.org/events/>

Browse the latest job opportunities here: <http://iflaonline.org/job-adverts/>

Become a Friend of IFLA <http://iflaonline.org/home/friends-of-ifla/>

Support IFLA's work here: <http://iflaonline.org/sponsorship/donate/>



FRIEND ON FACEBOOK



FOLLOW ON TWITTER



VISIT OUR PAGE



IFLA
INTERNATIONAL FEDERATION
OF LANDSCAPE ARCHITECTS

Copyright © 2016 International Federation of Landscape Architects (IFLA), All rights reserved.

Subscribe	Past Issues	Our mailing address is: admin@iflaonline.org	Translate ▼
------------------	--------------------	---	--------------------

Want to change how you receive these emails?
You can [update your preferences](#) or [unsubscribe from this list](#)

This email was sent to <<Email Address>>
[why did I get this?](#) [unsubscribe from this list](#) [update subscription preferences](#)
International Federation of Landscape Architects · Av Louise 149/24, 12th floor · Brussels 1050 · Belgium

