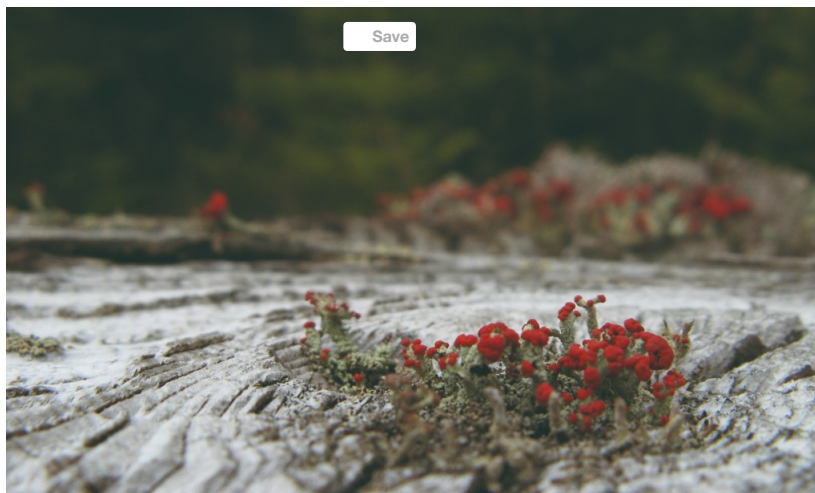


## IFLA NEWS



IFLA has now opened voting in the 2018 World Level Elections.

The following candidates have been nominated and are eligible for election:

**IFLA President:** Damian Tang (SILA) and James Hayter (AILA)

**IFLA Treasurer:** Jeremy Dennis (DL) and Raquel Peñalosa (CSLA)

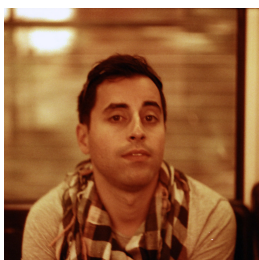
**IFLA Standing Committee Chair on Communications and External Relations:** Monica Pallares (SAPM)

**IFLA Standing Committee Chair on Education and Academic Affairs:** Salma Samaha (LELA)

**IFLA Standing Committee Chair on Professional Practice and Policy:** Marina Cervera I Alonso de Medina (AEP)

The delegate of each National Association has received an email with a secure link through which to vote. The Manifesto and Brief Biography for candidates will also be available by following the secure link. Voting closes on 16 April 2018.

If you have any questions about submitting the vote of your National Association, please write to IFLA Executive Secretary Sally Robertshaw ([admin@iflaonline.org](mailto:admin@iflaonline.org)) with IFLA Chair for Communications and External Relations Bruno Marques in copy ([chair.cer@iflaonline.org](mailto:chair.cer@iflaonline.org)).



## 19 March 2018

This IFLA News comes from Chair of IFLA CER Committee Bruno Marques

---

Events from around the World: <http://iflaonline.org/events/>

Browse the latest job opportunities here: <http://iflaonline.org/job-adverts/>

Become a Friend of IFLA <http://iflaonline.org/home/friends-of-ifla/>

Support IFLA's work here: <http://iflaonline.org/sponsorship/donate/>



**IFLA**  
INTERNATIONAL FEDERATION  
OF LANDSCAPE ARCHITECTS



---

This email was sent to <<Email Address>>

[why did I get this?](#) [unsubscribe from this list](#) [update subscription preferences](#)

International Federation of Landscape Architects · Av Louise 149/24, 12th floor · Brussels 1050 · Belgium

MailChimp