

IFLA NEWS



Landscape Architects Without Borders/IFLA and Architects Sans Frontieres International partnership

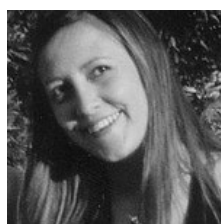
[Landscape Architects Without Borders \(LAWB\)](#) working group and Architects Sans Frontieres International (ASF-I) joined their effort and agreed on establishing a Memorandum of Understanding to encourage the collaboration and joint promotion of ASF-I and IFLA and create an alliance of professional organizations in architecture and landscape architecture to better serve the professional needs of their members, associated partners and society.

The MOU acknowledges the missions, vision and objectives of both organizations. With LAWB committed to work with vulnerable and disadvantaged communities, especially those affected by war, conflict and natural disaster, helping them to re-create safe, sustainable and dignified living conditions; and ASF-I being concerned with social justice, the cultural and environmental aspects of architecture and the conservation of the human and physical heritage aspects of the built environment.

This agreement formalizes the interest of both parties in enhancing the standing of the contribution of their respective areas of interest for the benefit of communities throughout the world.

Author: [Gabriella Trovato](#), Chair of LAWB Working Group.

Further information about LAWB and other IFLA PPP Working Groups can be found [here](#).



4 June 2018

This IFLA News comes from Chair of the PPP Committee, Marina Cervera

planning, technology and social innovations, as well as collaborations with various stakeholders with other cities. Through shared vision and active engagement, the public, private and people sectors can co-create innovative and integrated urban solutions for a more sustainable future. More info [here](#).

- Looking for a new job? **there are currently a number of landscape architecture jobs** on our site. More info [here](#).

Events from around the World: <http://iflaonline.org/events/>

Browse the latest job opportunities here: <http://iflaonline.org/job-adverts/>

Become a Friend of IFLA <http://iflaonline.org/home/friends-of-ifla/>

Support IFLA's work here: <http://iflaonline.org/sponsorship/donate/>



IFLA

INTERNATIONAL FEDERATION
OF LANDSCAPE ARCHITECTS



This email was sent to [<<Email Address>>](#)

[why did I get this?](#) [unsubscribe from this list](#) [update subscription preferences](#)

International Federation of Landscape Architects · Boulevard Léopold II, 53 · Brussels B-1080 · Belgium

MailChimp